



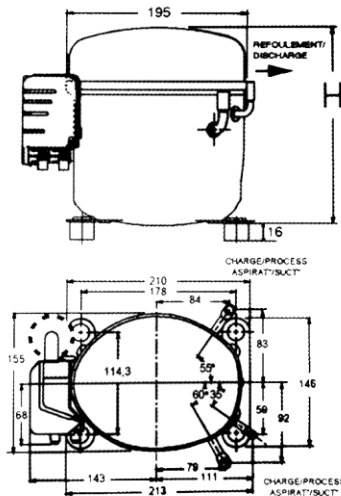
MOTOCOMPRESORES

MEDIA ALTA TEMPERATURA

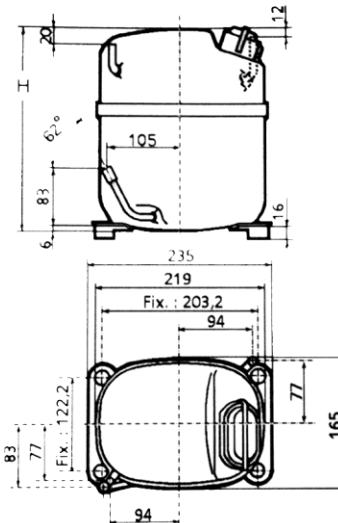
R12

HP (Potencia)	MODELO	Cilindrada cm ³	Carga Aceite cm ³	Enfriamiento	Rendimiento Frigorífico (Kcal/h)								Volts / No f / Hz	Ø Succión	Ø Descarga	Peso Bruto Kg	H Altura
					Temperatura Evaporación												
					-25°C	-20°C	-15°C	-10°C	-5°C	0°C	+7,2°C	+15°C					
1/4	FACO4440M	12	350	V			321	420	527	658	884	1180	220/1/50	5/16"	1/4"	12	194
1/3	FACO4452M	15,2	887	V	151	254	374	512	667	834	1103	1419	220/1/50	1/2"	1/4"	21	258
1/2	FACO4461M	18,3	887	V	206	323	464	624	804	1002	1297	1638	220/1/50	1/2"	1/4"	21,5	258
3/4	FACO4492M	25,95	887	V	331	495	697	929	1200	1496	1974	2580	220/1/50	1/2"	5/16"	22,5	271
1	FACO4511M	32,7	887	V	512	718	980	1286	1634	2004	2608	3440	220/1/50	5/8"	5/16"	23	282
1	FACO4511T	32,7	887	V	512	718	980	1286	1634	2004	2608	3440	380/3/50	5/8"	5/16"	23	282
1 1/2	FACO4518M	53,2	1330	V			1299	1711	2219	2838	3893	5237	220/1/50	5/8"	1/2"	33,4	321
1 1/2	FACO4518T	53,2	1330	V			1299	1711	2219	2838	3893	5237	380/3/50	5/8"	1/2"	33,4	321

HP 1/4



HP 1/3 - 1/2 - 3/4 - 1



HP 1 1/2

